

East Sussex Local Transport Plan 4 (LTP4) 2024 - 2050

17 November 2023

[eastsussex.gov.uk](https://www.eastsussex.gov.uk)



1. Welcome and agenda

1. Welcome

2. LTP4 Strategy

- ❖ 2a - Background
- ❖ 2b - Draft Strategy
- ❖ 2c - Draft Implementation Plan
- ❖ 2d - Assessments
- ❖ 2e - Modal Strategies

3. Communications and engagement - Infrastructure Planning & Place Team

2a Background - What is a Local Transport Plan?

Sets out strategy and policy framework for transport

Enables transport, economic, social and environmental challenges and opportunities to be identified

Identifies investment priorities

Establishes how to improve, manage and maintain the transport network

2a Background - What are the LTP4 Stages of development?

Stage 1

SCOPING

- ❖ Evidence Review
 - ❖ Policy
 - ❖ Data
- ❖ Early stakeholder engagement

Aug – Dec 2022

Stage 2

STRATEGY DEVELOPMENT

- ❖ Consultation analysis
- ❖ LTP4 development
 - ❖ Scenario development
 - ❖ Vision, objectives
 - ❖ Options & packaging
 - ❖ Assessments
 - ❖ Stakeholder engagement
- ❖ Consultation on draft strategy

Jan 2023 – Feb 2024

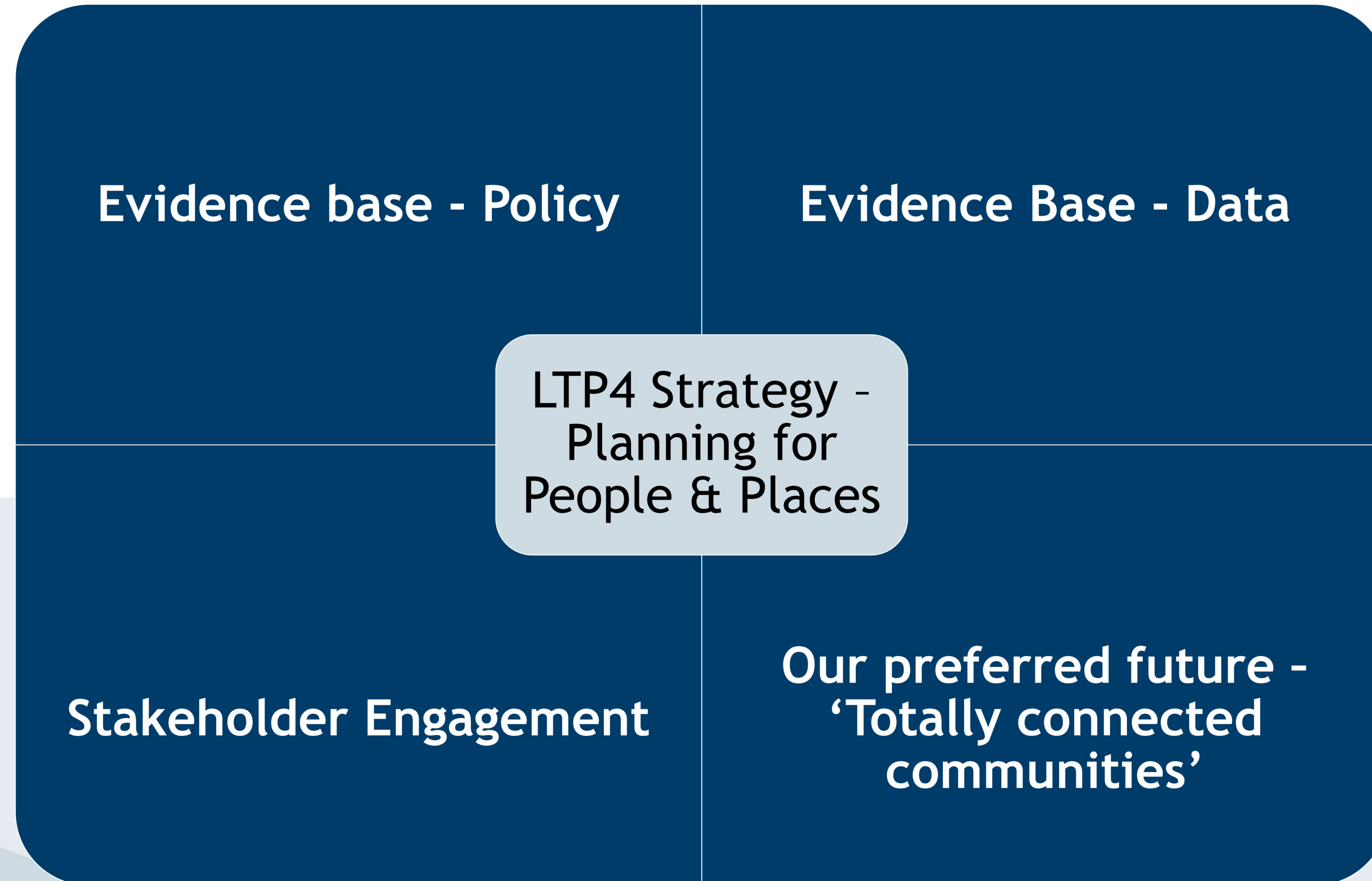
Stage 3

DELIVERY & MONITORING

- ❖ LTP4 adoption
- ❖ Delivery
- ❖ 'Live Document' Monitoring

2024 - 2050

2a Background - What has LTP4 been informed by?



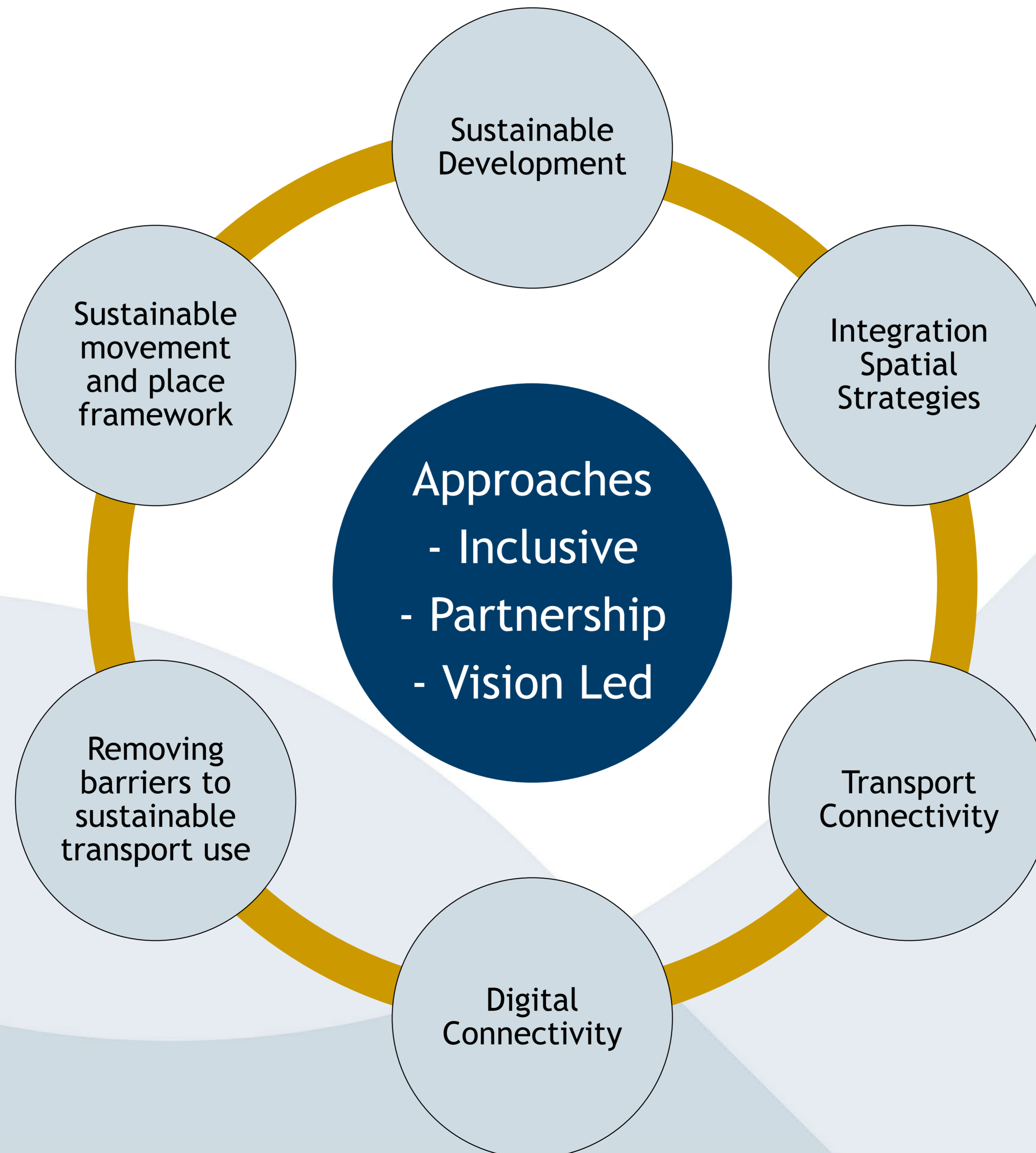
2b What is the vision?

‘An inclusive transport system that connects people and places, is decarbonised, safer, resilient, and supports our natural environment, communities and businesses to be healthy, thrive and to prosper.’

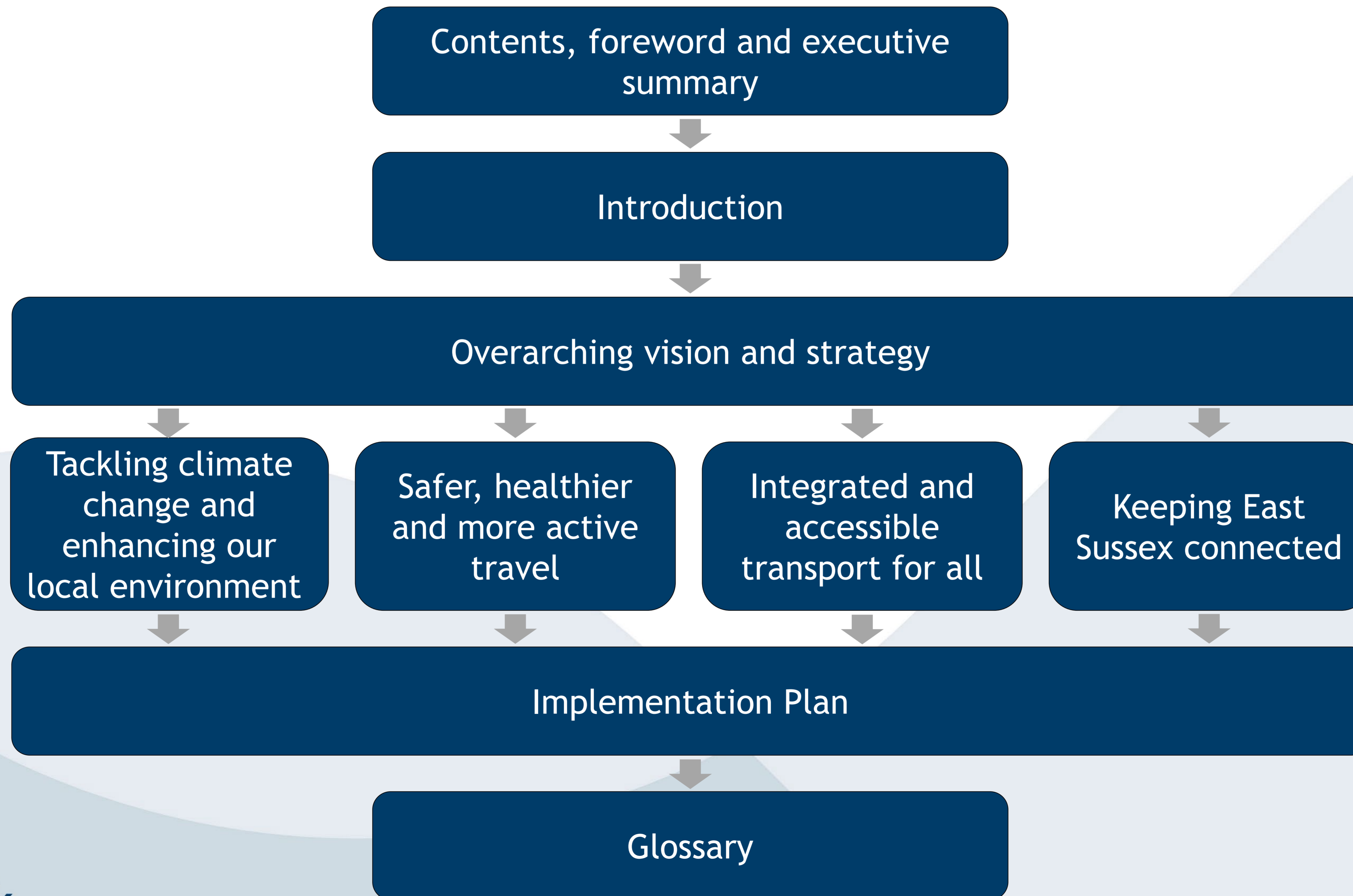
2b What are the objectives?

- ❖ **Deliver safer and accessible journeys**
- ❖ **Support healthier lifestyles and communities**
- ❖ **Decarbonise transport**
- ❖ **Conserve and enhance our local environment**
- ❖ **Support sustainable economic growth**
- ❖ **Strengthen the resilience of our transport networks**

2b What are the approaches and principles?



2b How is the LTP4 structured?



Theme A: Tackling climate change and enhancing our local environment

This chapter focuses on policies and schemes that will support decarbonisation of the transport system and the way in which transport can support, protect, and enhance our natural and built environment.

- ❖ **Policy A1: Reducing emissions**
- ❖ **Policy A2: Future zero emission vehicles and infrastructure**
- ❖ **Policy A3: Resilience and adaptation**
- ❖ **Policy A4: Biodiversity and natural capital**
- ❖ **Policy A5: Energy supply**

Theme B: Safer, healthier and more active travel

This chapter sets out how the plan will reduce health inequalities and enhance health and wellbeing through enabling increased physical activity, improved local connectivity, reduced emissions which impact on air quality and increase access to nature greenspace and create healthy places.

- ❖ **Policy B1: Healthy Lifestyles**
- ❖ **Policy B2: Active travel**
- ❖ **Policy B3: Road Safety**
- ❖ **Policy B4: Air quality**
- ❖ **Policy B5: Improved access to green and blue infrastructure**
- ❖ **Policy B6: Placemaking**
- ❖ **Policy B7: Rights of Way**

Theme C: Integrated and accessible transport for all

This chapter is about the opportunities for integrating infrastructure and services to enable seamless and accessible journeys. Focusing on ensuring that as many people as possible are within reasonable distance of a high quality, frequent and reliable public transport provision.

- ❖ **Policy C1: Inclusive accessibility**
- ❖ **Policy C2: Bus and coach**
- ❖ **Policy C3: Rail**
- ❖ **Policy C4: Integrating transport**
- ❖ **Policy C5: Demand responsive (taxi, private hire and digital demand responsive transport) and community transport**
- ❖ **Policy C6: Public transport infrastructure**

Theme D: Keeping East Sussex connected

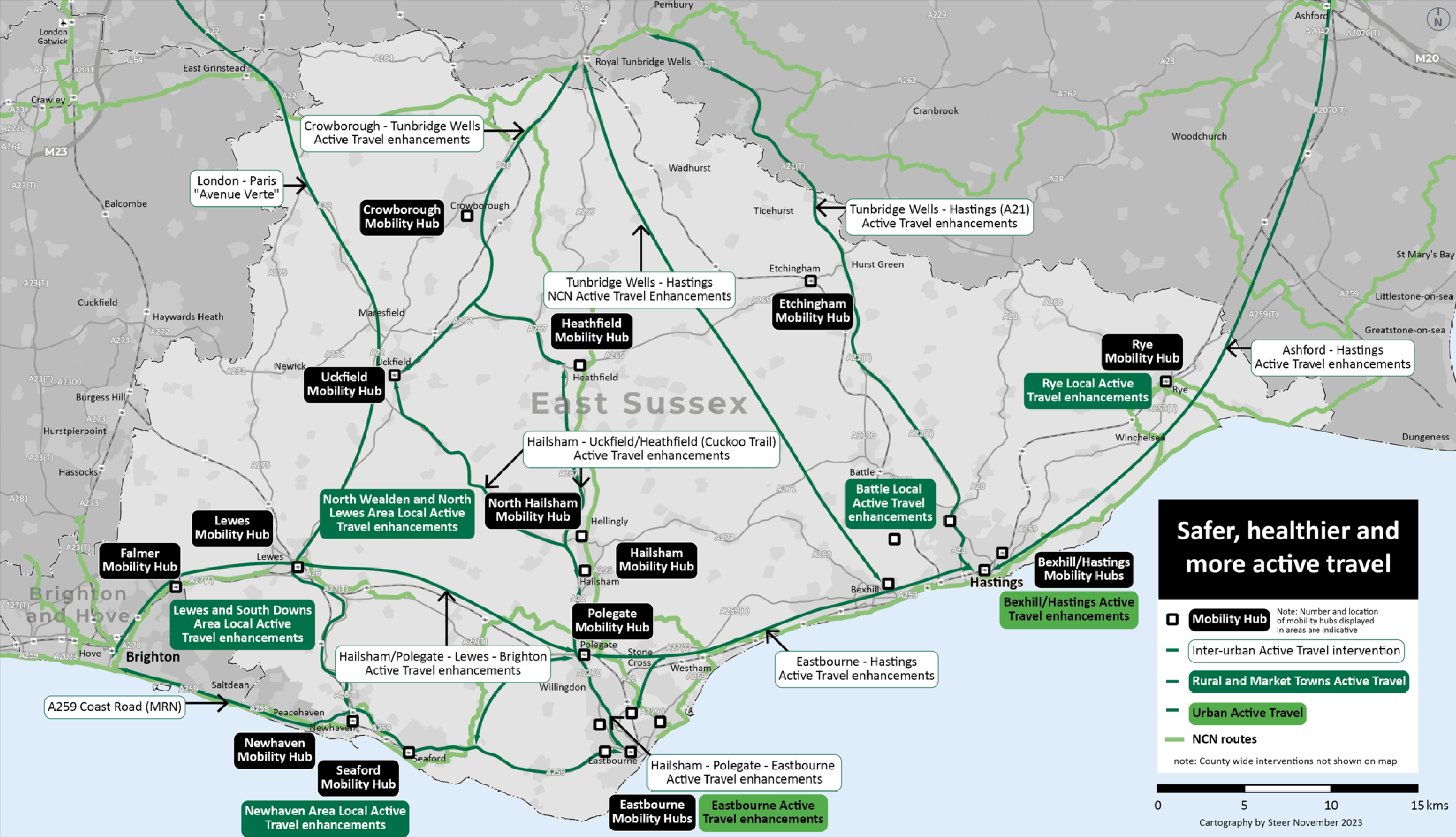
This chapter focusses on how we will support people and businesses in getting where they need to go, quickly and reliably. Specifically, longer distance highway, railway and bus schemes are of importance as well as freight.

- ❖ **Policy D1: Strategic connectivity**
- ❖ **Policy D2: Freight and international gateways**
- ❖ **Policy D3: The needs of business and the visitor economy**
- ❖ **Policy D4: Supporting sustainable development and development control**
- ❖ **Policy D5: Parking**
- ❖ **Policy D6: Highways maintenance and asset management**

2c Implementation Plan

Sets out delivery information about each intervention (schemes and policies) including:

- ❖ timescales
- ❖ delivery partners
- ❖ estimated costs
- ❖ potential funding sources



London - Paris "Avenue Verte"

Crowborough - Tunbridge Wells Active Travel enhancements

Tunbridge Wells - Hastings (A21) Active Travel enhancements

Ashford - Hastings Active Travel enhancements

Hailsham - Uckfield/Heathfield (Cuckoo Trail) Active Travel enhancements

North Wealden and North Lewes Area Local Active Travel enhancements

Lewes and South Downs Area Local Active Travel enhancements

Hailsham/Polegate - Lewes - Brighton Active Travel enhancements






A259 Coast Road (MRN)

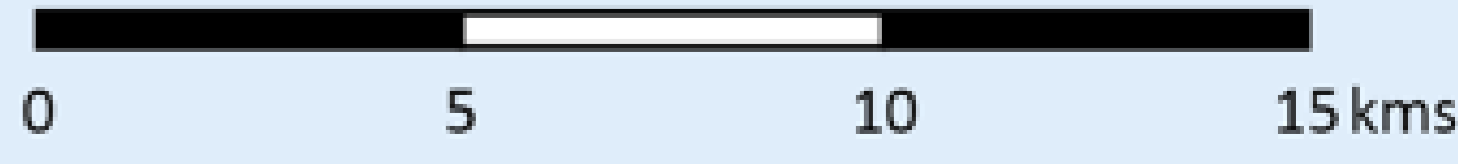
Newhaven Area Local Active Travel enhancements

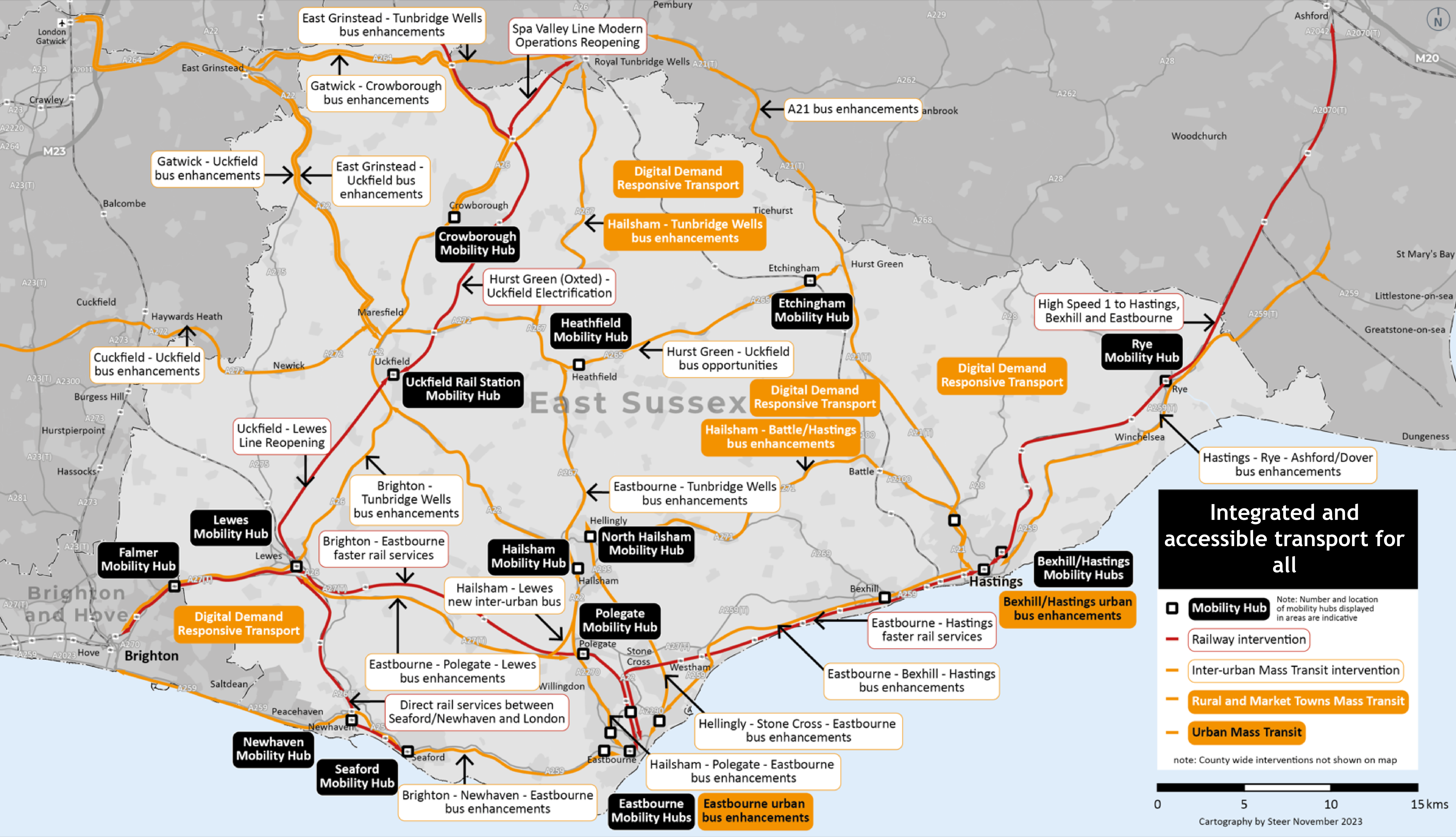
Hailsham - Polegate - Eastbourne Active Travel enhancements

Eastbourne Active Travel enhancements

Safer, healthier and more active travel

-  **Mobility Hub** Note: Number and location of mobility hubs displayed in areas are indicative
 -  **Inter-urban Active Travel intervention**
 -  **Rural and Market Towns Active Travel**
 -  **Urban Active Travel**
 -  **NCN routes**
- note: County wide interventions not shown on map





East Grinstead - Tunbridge Wells bus enhancements

Spa Valley Line Modern Operations Reopening

Gatwick - Crowborough bus enhancements

A21 bus enhancements

Gatwick - Uckfield bus enhancements

East Grinstead - Uckfield bus enhancements

Digital Demand Responsive Transport

Hailsham - Tunbridge Wells bus enhancements

Crowborough Mobility Hub

Hurst Green (Oxted) - Uckfield Electrification

Etchingham Mobility Hub

High Speed 1 to Hastings, Bexhill and Eastbourne

Rye Mobility Hub

Cuckfield - Uckfield bus enhancements

Heathfield Mobility Hub

Hurst Green - Uckfield bus opportunities

Digital Demand Responsive Transport

Digital Demand Responsive Transport

Uckfield Rail Station Mobility Hub

Hailsham - Battle/Hastings bus enhancements

Hastings - Rye - Ashford/Dover bus enhancements

Uckfield - Lewes Line Reopening

Brighton - Tunbridge Wells bus enhancements

Eastbourne - Tunbridge Wells bus enhancements

Lewes Mobility Hub

Brighton - Eastbourne faster rail services

Hailsham Mobility Hub

North Hailsham Mobility Hub

Bexhill/Hastings Mobility Hubs

Falmer Mobility Hub

Hailsham - Lewes new inter-urban bus

Polegate Mobility Hub

Eastbourne - Hastings faster rail services

Bexhill/Hastings urban bus enhancements

Digital Demand Responsive Transport

Eastbourne - Polegate - Lewes bus enhancements

Eastbourne - Bexhill - Hastings bus enhancements

Direct rail services between Seaford/Newhaven and London

Hellingly - Stone Cross - Eastbourne bus enhancements

Newhaven Mobility Hub

Seaford Mobility Hub

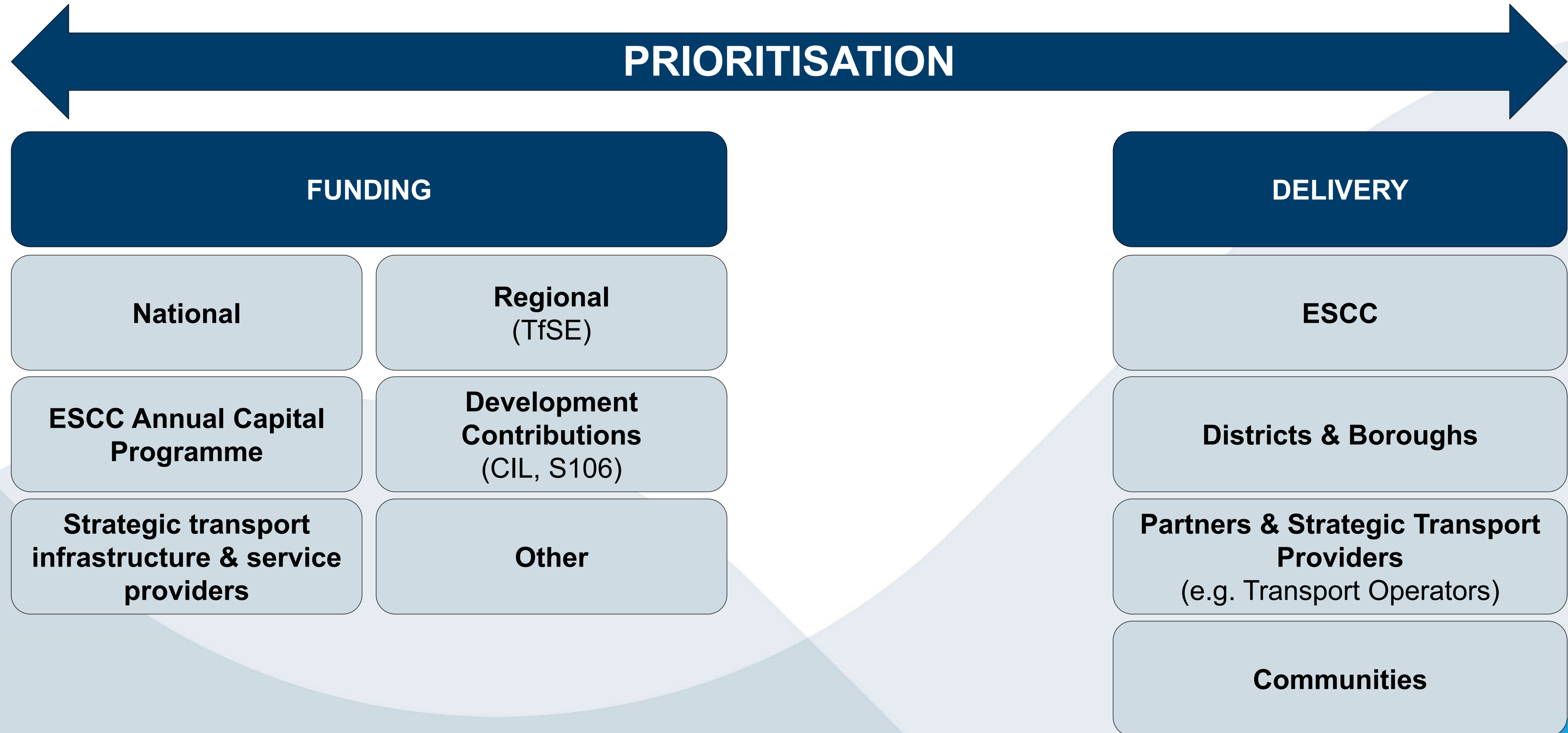
Brighton - Newhaven - Eastbourne bus enhancements

Hailsham - Polegate - Eastbourne bus enhancements

Eastbourne Mobility Hubs

Eastbourne urban bus enhancements

2c Funding & Prioritisation

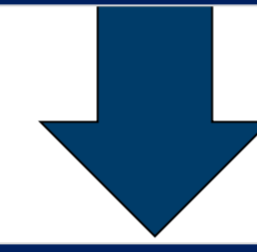


2d LTP4 Assessments

- ❖ Carbon Assessment
- ❖ Integrated Impact Assessment
 - ❖ Equalities Impact Assessment
 - ❖ Health Impact Assessment
 - ❖ Strategic Environmental Assessment
 - ❖ Habitats Regulation Assessment

2e LTP4 Supporting Modal Strategies

East Sussex Local Transport Plan 4



LTP4 Implementation Plan

Local Cycling & Walking
Infrastructure Plan

Bus Service Improvement
Plan

Electric Vehicle Charging
Electricity

Freight Strategy

Future Mobility Strategy

Rail Strategy

Consultation

**27 November 2023 -
25 February 2024**

3a LTP4 Communications and engagement

- ❖ Digital first approach
 - ❖ Available ESCC consultation hub
 - ❖ Consultation duration of 13 weeks, closing Sunday 25 February 2024
 - ❖ Launch video and launch webinar
 - ❖ Presentations various organisations & groups across the County
- ❖ Paper copies will be available in ESCC libraries and from the LTP team upon request
 - ❖ LTP Team will support any additional requirements to fully participate in consultation
- ❖ Contact an LTP officer:
 - ❖ email LocalTransportPlan@eastsussex.gov.uk
 - ❖ telephone via ESCC switchboard

Thank you for listening