

Solar Summit 18th November 2022

Community Energy & how does it work 2.30-3pm



Chris Rowland CEO
Ouse Valley Energy Services Company



Kayla Ente CEO
Brighton & Hove Energy Services Company



Sustainable Business and Solar Summit November 18 2022



BHESCO
*Brighton & Hove Energy
Services Co-operative*

The Challenge



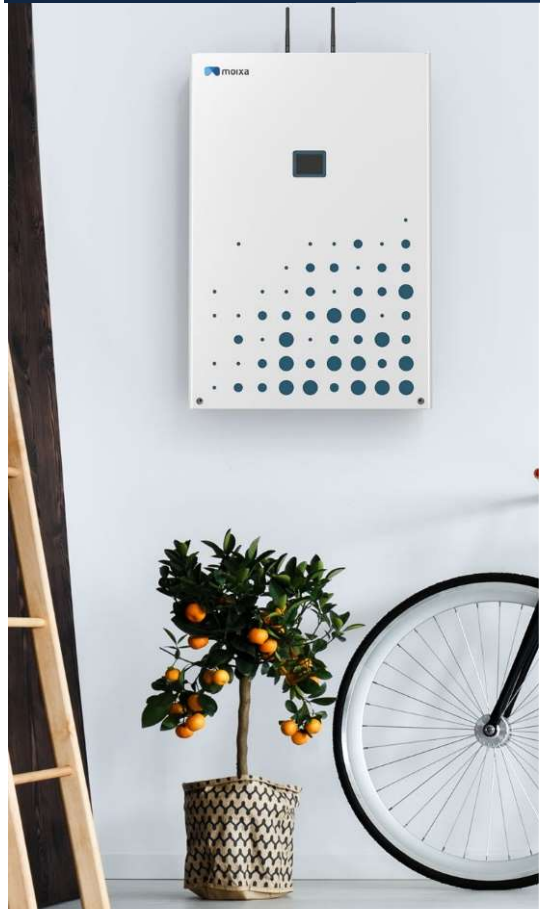
Big energy consumers – industry & manufacturing



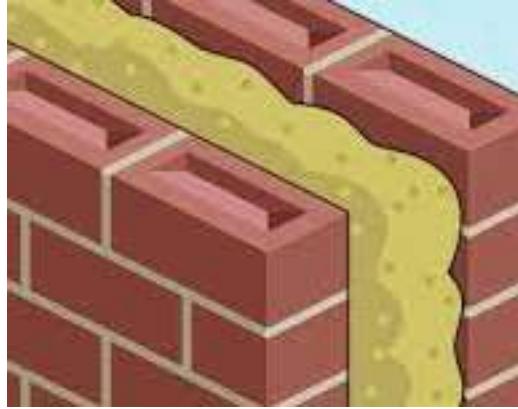
The Solutions - Solar power



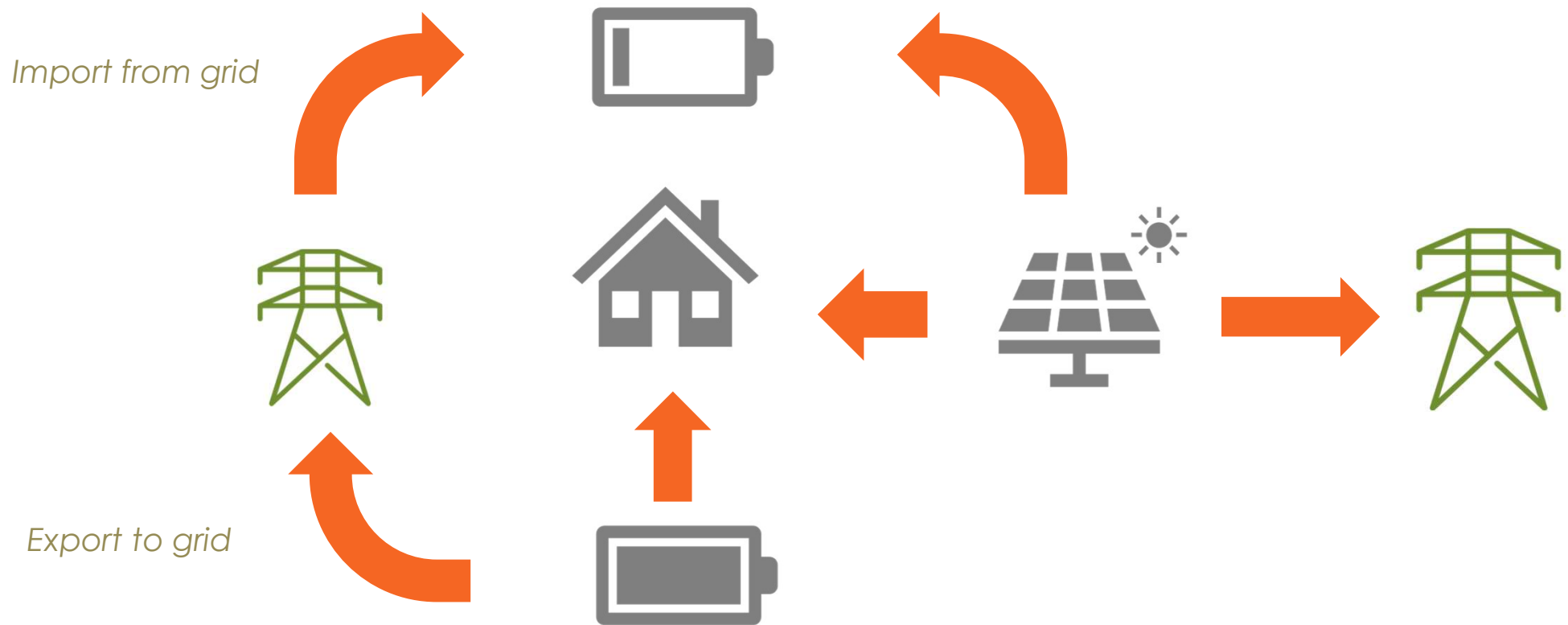
The Solutions – Energy Storage



Options for improving energy efficiency



The Solutions – Energy Trading/ Flexibility Services



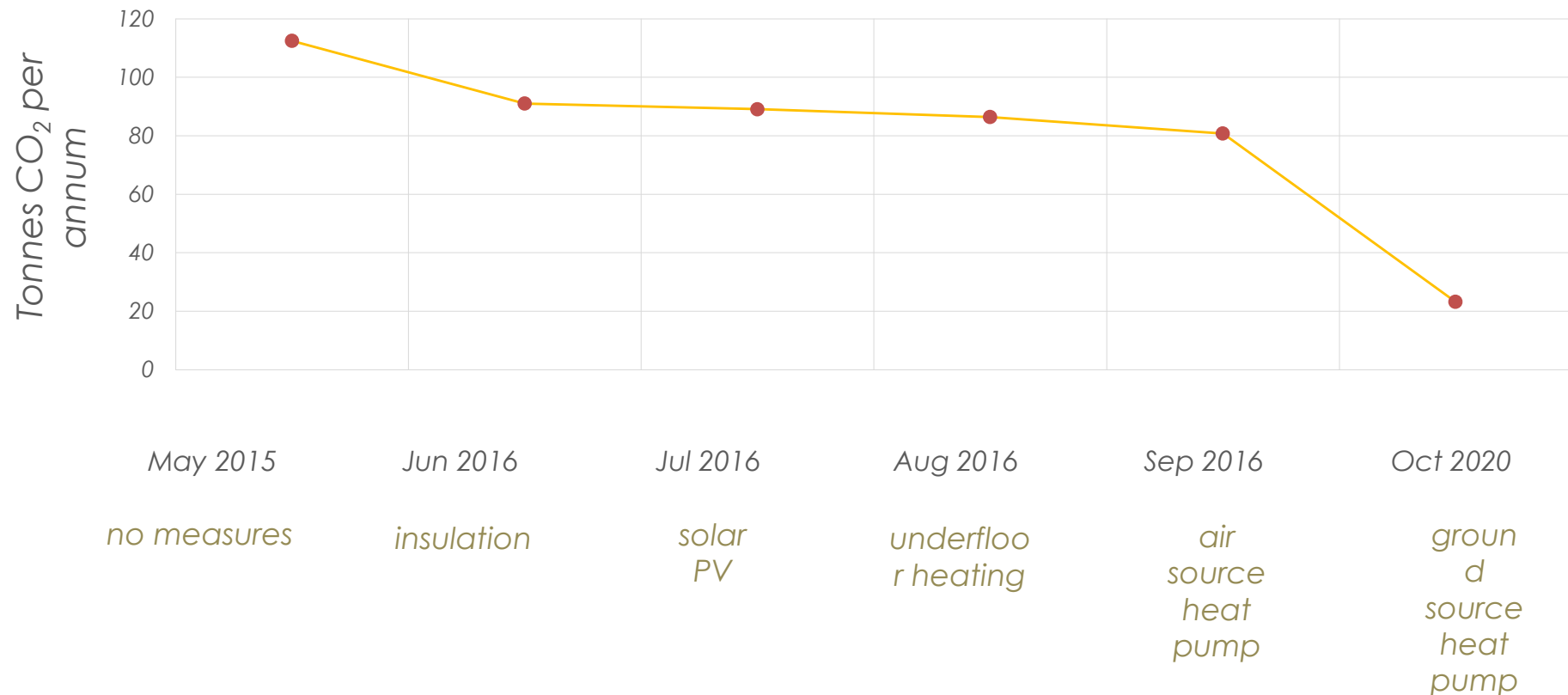
The Solutions – Air Source Heating



The Solutions – Ground Source Heating



Case Study – Energy efficiency in a phased plan



Questions?



info@bhESCO.co.uk

www.bhESCO.co.uk

0800 999 6671



[@BHenergyerservice](https://twitter.com/BHenergyerservice)



[/BHESCO](https://www.facebook.com/BHESCO)



Brighton & Hove Energy Services Co-operative

Enabling Community Carbon Reduction

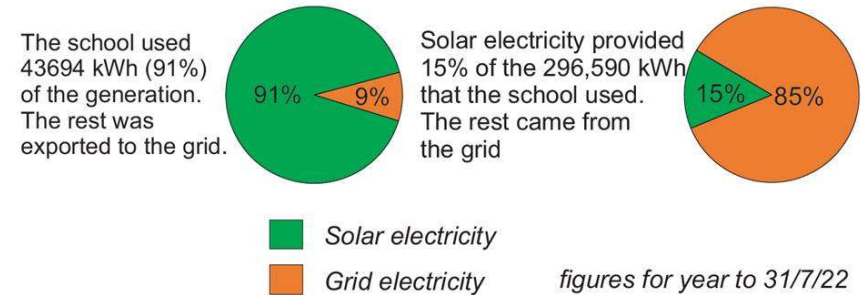


OVESCO's vision

Our vision is for a future in which 100% of our energy needs are generated locally from renewable sources



Last school year, the school's solar panels generated 47,951 kWh of electricity.



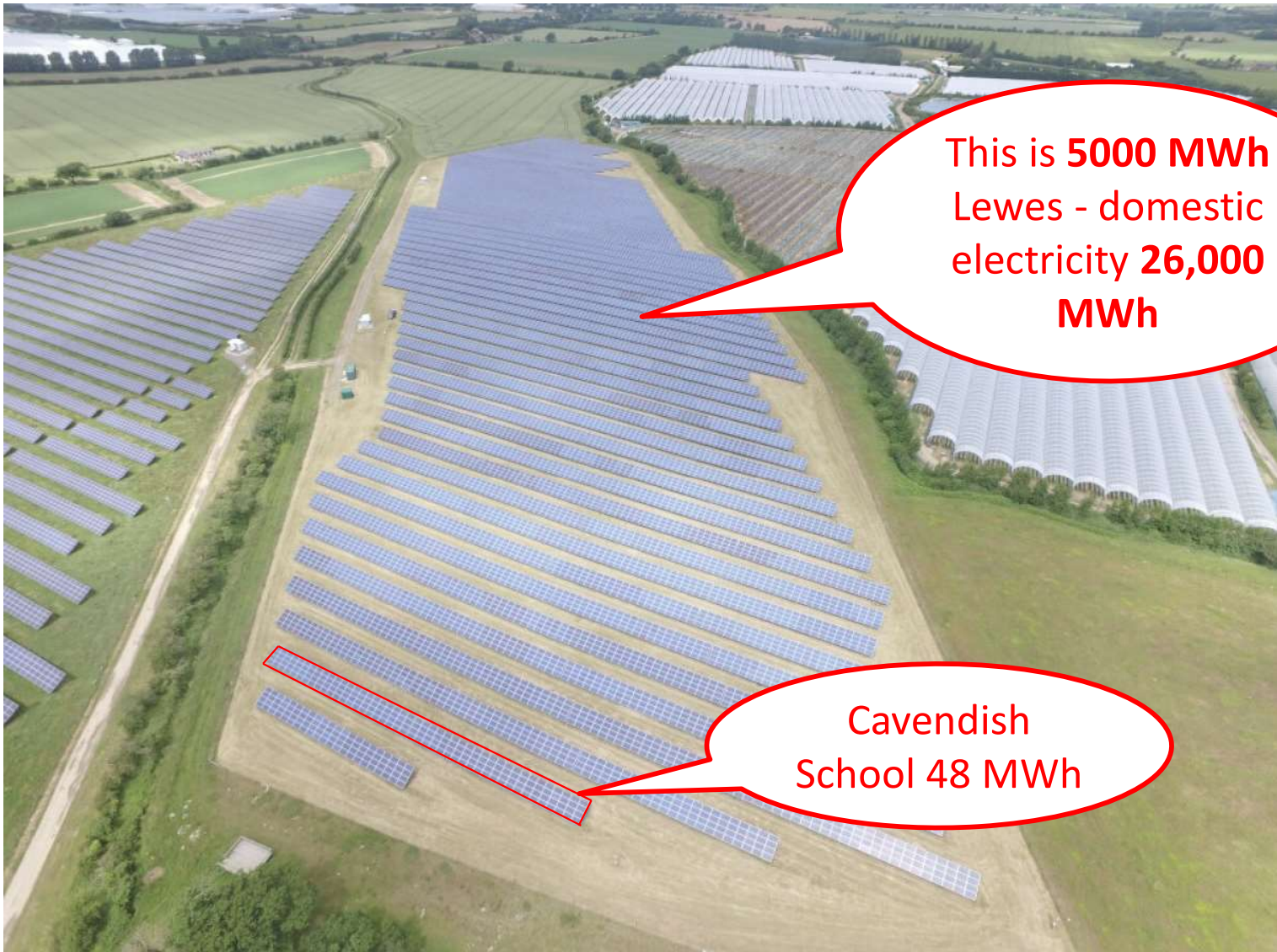
Cavendish School Eastbourne 50kW's of community solar PV
 172 solar panels provide 15% of your school's electricity



Meadow Blue
Community Energy



Merston 5MW Solar Farm near Chichester is producing **5,000+ MWh** of electricity per year & sufficient to meet the annual electricity consumption of **1,235 typical homes**.
Community benefit fund for Help Our Kelp & will be going to local energy advice 2024



This is **5000 MWh**
Lewes - domestic
electricity **26,000**
MWh

Cavendish
School 48 MWh

To get near to the Lewes's domestic electricity usage of **26,000 MWh** we would need **5 Meadow Blue Community Energy Solar Farms**



Lewes Town

Domestic **electricity** usage = 26,000 MWh

Nondomestic **electricity** usage = 12,000 MWh

Domestic **gas** usage = 91,000 MWh

Nondomestic **gas** usage = 31,000 MWh

Total Energy Use **160,000 MWh** (does not include transport or goods we buy in)

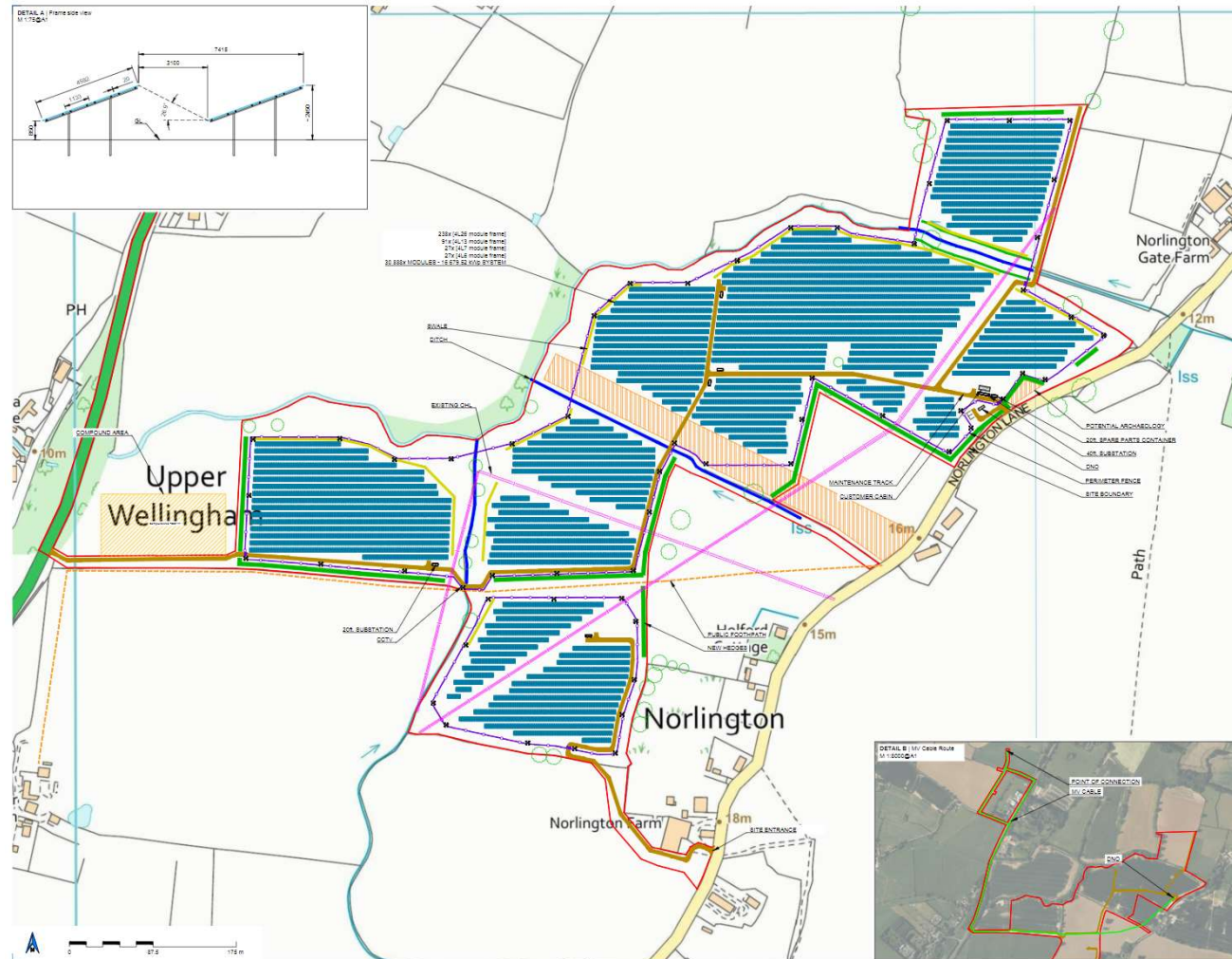
Population of Lewes roughly 17,300 (Eastbourne is about 103,000)



OUSE VALLEY SOLAR FARM



17MW MW Solar Farm North for Lewes District estimate **17,000+ MWh** per year
& sufficient to meet the annual electricity consumption of roughly **4800 typical homes**.
About 65% of Lewes Towns domestic electricity supply



RCEF Funded to get the project to planning, taken 2½ years, in area of grid constraint
65 acre site, 230% biodiversity increase, community ownership and fund

CommuniHeat: to develop the roadmap which aims to understand how rural communities can switch to low-carbon heating using electricity in a way that ensure future comfort, affordability and a smooth transition.

Setting up a Village Members Co-operative where local people can invest in local renewables and also receive support from their local energy champions and the Co-operative:

- Establish a trusted local energy service
- Establish a trusted local installer network
- Investment opportunities harnessing community wealth
- Enable low interest loans for retrofits
- Offer a local energy bill tariff
 - A time of use energy tariff
 - Flexing and trading with energy market
 - Sharing profit with members through our energy bills
- Harnessing benefit and resilience
- Supporting vulnerable
- Enabling smooth transition

CommuniHeat Roadmap

CommuniHeat

PATHWAY TO NET ZERO

CommuniHeat – Results for the Roadmap

20% energy saving

In annual electricity demand vs uncoordinated approach

27% reduction in household overall energy costs

Compared to the uncoordinated approach in both 2030 & 2050, driven by lower energy costs

17 renewable sites

15 PV farms - 4.5 MWp
2 wind farms - 1.6 MWp

Retrofits

430 homes with building fabric retrofits

500 heat pumps installed

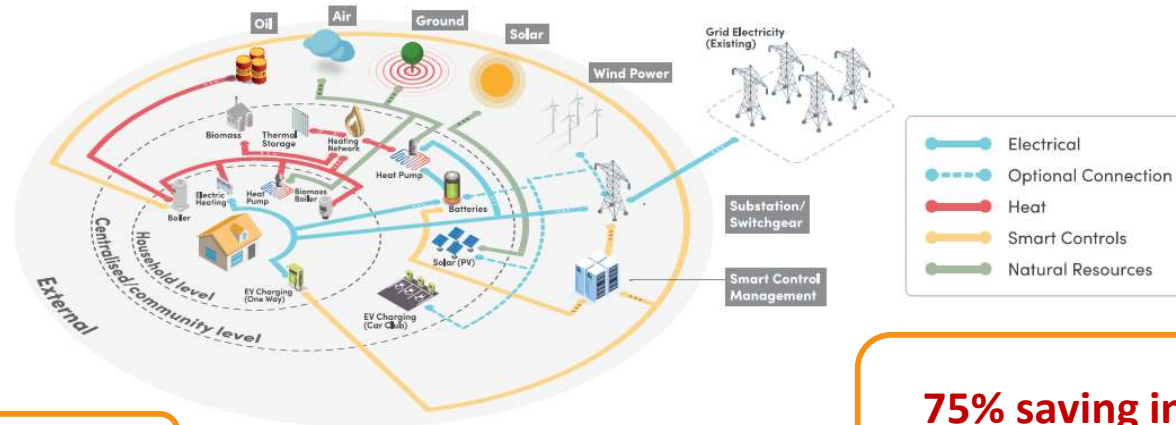
Compared to 340 installed in the uncoordinated approach

Community renewables deliver 37% of total electricity demand

£4m community investment needed

75% saving in network reinforcement costs

Compared to the uncoordinated approach



Ouse Valley Climate Action – 2023-26 provides OVESCO with a Project Manager, Technical Manager & 5 part time Climate & **Energy Champions** for Ouse Valley. OVESCO is one of many partners to benefit from this Lottery funder project.

£2m
for climate action
in the Ouse Valley



**OUSE
VALLEY**
CLIMATE ACTION



Thank you



Chris Rowland CEO
Ouse Valley Energy Services Company

Contact Details:
chris@ovesco.co.uk
01273 472405



Kayla Ente CEO
Brighton & Hove Energy Services Company

Contact Details:
kayls@bhesco.co.uk
01273 766671